

BEECROFT CHELTENHAM CIVIC TRUST INC

PO Box 31, Beecroft NSW 2119

www.2119.org.au

bcct2119.blogspot.com

BULLETIN 3

August 2012

President Michael Stove
Email mstove@optusnet.com.au

Acting Secretary Peter Hewitt
Email secretary@2119.org.au

BCCT was established in 1964 and has been protecting our community for 48 years.

In this issue

- Spring Walk Sunday 26 August
- Meet the Candidates Public Meeting Monday 27 August
- Beecroft in Bloom Friday 7 and Saturday 8 Sept
- Trees Poisoned in Beecroft
- Five Storey Uniting Care Development Approved by JRPP
- What's Happening with the NWRL
- Transition Towns
- History of 109 Copeland Road
- Join the Civic Trust to help us preserve our unique community

Beecroft Cheltenham Civic Trust Spring Walk

Sunday 26 August, 2pm to 4 pm

Start at the end of Day Rd, Cheltenham 100 metres past the car park. All welcome.

National Park so no dogs allowed. Wear sturdy shoes and bring your water bottle.

Afternoon tea will be provided after the walk at 4pm at the end of Day Rd.

The walk will cross Devlins Creek near Day Rd and head up the walking track to Britannia Rd near Council's plant nursery. Then we'll turn right and walk east past the playing fields then turn off to the left onto the fire trail that goes to the end of the ridge where there is a good view of Marsfield area. Then we go down to the junction of Lane Cove River and Devlins Creek where we turn right again and follow the fire trail back to Day Rd, passing Whale Rock on the way. Points of interest will be the views, plant identification and flowers, bush fire recovery and storm water damage in creeks.

Public Meeting and Meet the Candidates for Council in C Ward Monday 27 August, 7 for 7.30 at Cheltenham Recreation Club

Beecroft Cheltenham Civic Trust is holding a public meeting to allow members and residents to meet the candidates for C Ward in the **Council Election on Saturday 8 September. Remember, voting is compulsory.** The meeting will also allow you to discuss matters of concern with the Trust committee and to receive an update on what your Trust has been doing for the community.

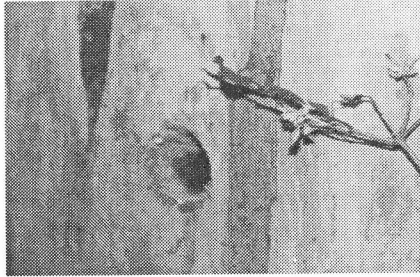
Beecroft in Bloom – Beecroft Cheltenham Lions Club

Friday 7 September – Art Show and Official Opening at Beecroft Uniting Church Hall, 7.30pm. Finger food and non-alcoholic punch will be served. It is necessary to buy tickets \$20 each at Ray White Beecroft. All proceeds will go to the Lions Club fund raising project, a Dialysis machine in the emergency department at Hornsby Hospital. **The Beecroft Cheltenham History Group will launch their web site at this event**

Saturday 8 September – Art Show and Street Fair

Artists who wish to exhibit works should contact Hugh Talbot 0425377095 or htalbot@bigpond.net.au by 15th August.

Trees Poisoned in Beecroft



Just a few days after the property at 109 Copeland Rd was sold at auction, nearby residents noticed some suspicious activity happening on the site and on later inspection found that two large Sydney Bluegums (*eucalyptus saligna*) on the site had been drilled and poisoned. The poison containers were even brazenly discarded in the rubbish bin on the site.

This illegal activity has now been reported to Police and Council and the Council is endeavoring to notify the new owners that the poisoned trees will now have a "no build" radius around the dying trees in accordance with the Australian Standard as if the trees were still alive. The exclusion zone will be 12 times the diameter of the trees, measured at chest height, expressed as a radius. In addition to this restriction on the site the Council will also require the dead trees to be left in place for an extended period of time (to act as a native bird habitat) until new replacement trees, that will be required to be planted, reach a required level of maturity to replace the poisoned trees.

Unfortunately Council will not know who the new owners are until the property sale settles as the selling agent will not advise Council who the purchasers are. If any residents can help Council on this matter they are requested to please contact Council or the Civic Trust. The Civic Trust understands that the Settlement date was to be July 16 but it has now been delayed.

The Civic Trust will now also be carefully watching this site and will be intending to act to ensure that the existing building is retained in any future development as the property is located in the Beecroft / Cheltenham Heritage Conservation Area and the house (whilst in need of some maintenance) is considered worthy of retention in any future development proposal.

Read the history of this house later in this bulletin.

Five Storey Uniting Care Development in Beecroft Approved by JRPP

Despite overwhelming opposition by the community, the Joint Regional Planning Panel (JRPP) has approved the modified application for Uniting Care to develop the site between Hannah Street and Copeland Road with three blocks up to 5 storeys. It must be recognised that, due to a loophole in State planning laws, a 'charitable organisation' building 'affordable housing' is exempt from Council zoning restrictions. However, some 300 submissions against it were received, not one member of the community spoke for the proposal and many, including the Trust, spoke against it at both hearings of the JRPP. Local issues including heritage, traffic and pedestrian safety and visibility from Copeland Road were seemingly ignored by the panel, as was the local opinion that it is completely 'out of character' with the area.

The first JRPP hearing asked the developer to ensure greater privacy for residents in Hannah Street. This was achieved by stepping down the western end of the blocks, changing the balconies and installing screening. This reduced the number of units by 5 to 46. Unfortunately, no units were removed from the eastern end of block 3, closest to Copeland Road, to lower its height from five to four storeys, which would have reduced its visibility and the overshadowing of houses in Copeland Road. The developer has bought the house at 15 Hannah St and will use it as a community centre. Some modifications were made to the internal roadway and to drainage. No details were given as to finishes, materials and colours. There have been no detailed landscaping plans or management plan for the Blue Gum High Forest area which fortunately will be retained in the south west corner of the property.

The second JRPP of four members was split 2/2 and the casting vote of the chairman approved the application.

What's Happening with the NWRL

The Submissions Report for the North West rail Link has been lodged with the Department of Planning and Infrastructure. The report addresses issues raised by the community, local businesses, government agencies and councils to the first Environmental Impact Statement. It is now available to view by visiting <http://northwestrail.com.au/document/index/1#>. Specific reference to the Cheltenham site can be found by going to <http://northwestrail.com.au/>, open the 4MB document named Submission Report Ch 6 and 7, located low on the right hand side. Scroll down to part 6.3 on page 6 – 43 . Figure 6.11 shows the basic layout of the site.

Cheltenham: The size of the construction site will be reduced by 2,250m², cutting the amount of bushland that needs to be cleared. A previously proposed access road to the site from Castle Howard Rd will no longer be required, with access for light vehicles to the site to be from existing roads used to get to Cheltenham Oval.

It appears that heavy vehicle access to the Cheltenham site will still come from a road through the bushland off Castle Howard Road, despite our submissions opposing the destruction of this valued bushland. The Roads and Maritime submission notes that direct access from the M2 is likely to be unacceptable, even though they have not explained why when there are so many arguments against it. At least they don't seem to have rejected it outright. This gives us some hope that we can continue to fight for access from the M2.

PCCT is concerned that the proposal to make the tunnels only wide enough for single deck 'metro' style trains is unacceptable and short sighted. Metro style is hardly suited to such long distances. It is also proposed that this will link in with the Epping to Chatswood line and we would lose our direct connection. Surely the tunnels should be made wide enough to integrate the NWRL with the present rail system and allow greater flexibility. At no stage was the 'metro' system mentioned in the Environmental Impact Study.

Do You Know About Transition Towns?

The Transition Town movement began in the town of Totnes, Devon in the UK in 2006 and has spread worldwide in response to local communities wanting to take action to contribute to a more resilient future for their communities. The nearest to us is Transition Epping which joins the growing number of transition towns in Sydney that have started up in places such as Parramatta, Lane Cove and the Northern Beaches. Close to 1,000 transition towns exist worldwide!

The basic philosophy of transition towns is working at the local level in a practical way to support and care for each other, build community resilience and become more self-sufficient by living sustainably. Sourcing our needs locally can mean growing and sharing produce, using local services, car pooling schemes, bulk buying solar panels and water tanks, reuse and repair workshops and even creating local currencies and barter systems.

Transition Epping

Transition Epping was started by a group of local residents interested in working towards a better future for the Epping area. They had their first public meeting at North Epping in March 2010 and our official launch in the following October. It is not a stand-alone organisation, nor a lobby group. They started by running a series of workshops on various sustainability issues on the topics of energy efficiency, health and wellbeing, waste and greywater, local biodiversity and our ecological footprint, building community, transport and local food production.

To date the group has started a community garden at the North Epping shops, negotiated discounts on solar panels and water tanks, helped the local school establish a food garden and improved the local bus service.

If anyone was interested in starting a similar group in Beecroft or Cheltenham, please contact the Trust and we can direct you to the appropriate contact.

History of 109 Copeland Road, Beecroft –by the Beecroft Cheltenham History Group

Following the sale and restoration of Carmel on Beecroft Road, near the tennis courts, a few years ago another almost derelict house has recently been sold. This time the property is at 109 Copeland Road.

The original 4 lots upon which this property stands were acquired on the sale of the Field of Mars Common in 1887 by a real estate agent, George Dyson of Sydney. He presumably held it for speculative purposes. He sold the two corner lots in 1889 to William Allsopp of Picton, a railway employee. The other two lots were sold in 1908 to Walter Herbert Nichols of Tilba Tilba, a butcher. The corner lots were then sold in 1896 to James Doran the Station Master at Beecroft and in 1916 James' wife Eleanor Theresa Doran bought most of the other two lots. It is possible that James Doran was living on the site in 1912 and so presumably the house was built around this time.

From 1912 James Doran had his father living with him. The father, Patrick Doran, was a third cousin of Cardinal Moran, the Catholic Archbishop of Sydney. Patrick came from Leighlan Bridge in Ireland and had lived in NSW for over 50 years – during which time he had worked at Muswellbrook Railway Station until he retired in 1912. Being an Irishman Doran called the house Glendalough – after the sacred monastery of St Kevin in Ireland. After the death of the father, until 1920 the house was rented to Mrs Constance Mitchell. The present parcel was then sold in 1923 to Ann Elizabeth Firth of Beecroft, a widow.

Later that same year Mrs Firth sold the property to Leslie Alfred Redgrave (1882-1956) and he called it "Bellingara." Leslie Redgrave was the son of Charles Alfred Hurst Redgrave and Mary Jane (nee Bellingham). He was born in Newtown and married at St Leonards to Ruby Ella Bird (b 1886). Mr Redgrave had the telephone installed by at least 1931 and it remained in his name until 1944 with number Epping 1099. He was a school master and author. His books include *Gwen: a romance of Australian Station life* (1913), *Scatch Cock: a booklet of the bright birds of our bushland pictured in colour and rhyme for children* (1933), *Feathered favourites: a booklet of bird verse* (1932) and *Little bungalows: a practical handbook for the homemaker* (1937).

The property was transferred into the name of Ruby Ella Redgrave in 1931. Leslie moved to live at Oura via Wagga in 1943 and he died in Wagga in 1956. In 1939 Alice Walker, widow of Bondi, took out a Supreme Court injunction to stop her under aged daughter (Shirley) from marrying Ronald Leslie Redgrave the son of this household. The matter was settled by Shirley and Ronald agreeing to defer the wedding.

In 1956 the property was sold to Frank Gallaway and his wife Valda Elaine. He was a marine engineer. In 1959 it was sold to the most recent owner. It remained the owner's home (and that of his family) from then until 2012.

Sunday Lunches at Cheltenham Recreation Club

Buffet lunches catered by The Blue Elephant are held at Cheltenham Recreation Club on the second and fourth Sundays of the month. \$25 adults. Bookings are essential 9876 2629. A special Fathers Day lunch with live music will be held on Sunday 2 September, \$38.

Join the Beecroft Cheltenham Civic Trust now and be financial for 2013.

MEMBERSHIP RENEWAL/APPLICATION FORM 2013

Fees are \$20 household (two adults), \$10 individual

Surname (1)

First name (1)

Surname (2)

First name (2)

Address Post Code

Phone Number (02)

Mobile No.....

E-mail address (Please Print).....

Membership fees paid \$

Do you require a receipt?

YES /NO

Post this form to PO Box 31 Beecroft with your cheque or

*Deposit BSB 062 113 Commonwealth Bank Beecroft Account 10068238 or

*Electric Funds Transfer from your bank account via computer BSB 062 113 Commonwealth Bank
Beecroft Account 10068238. NB Use your name as reference.

***If you use either of these methods, please send a copy of this completed form or the same information to The Treasurer,
PO Box 31 Beecroft 2119 OR e-mail to treasurer@2119.org.au so that we can update our records. Thank You.**